

BANGABASI MORNING COLLEGE



TOPIC NAME

PEOPLE'S BIODIVERSITY REGISTER

NAME: SUDIP KHAMARU

CU ROLL NO: 222144 - 22 - 0012

CU REGISTRATION NO: 144 - 1111 - 0816 - 22

STREAM: B.A. GENERAL

PAPER: GEOGRAPHY (CC₂) SEMESTER: II

CONTACT NO: 8420392437

INDEX

SL no	Content	page no;
(1)	Acknowledgement	1
(2)	Flora Register	2-4
(3)	Fauna Register	5-6-7
(4)	Bibliography	8

ACKNOWLEDGEMENT

I, would like to express my special thanks of gratitude to my respected teacher prof. Smt. Aditi Das madam, who gave me the golden opportunity to do this wonderful project on this topic Biodiversity register of Flora and Fauna.

Secondly, I would like to thank my parents and friends who helped me a lot in finalizing this project within the limited time frame.

Lastly, I like to thank all my supporters who have motivated me to fulfill this project before the timeline.

GROUP PHOTO



INTRODUCTION

Banabitan Biodiversity park, popularly known as Central park is a public urban park in the heart situated over city of Joy. It is the second largest open space in Kolkata metropolitan Area after Maidan. It is the habitat for a varied species of flora and fauna. The built around an expansive water body. Banabitan is the epitome of a park is small pocket nature amidst the hustle and bustle of concrete city life.

TOPIC NAME

⇒ FLORA

PEOPLE

Biodiversity Register

• Place :- CENTRAL PARK (SALT LAKE, KOLKATA)

• Date :- 12th MAY, 2023

FLOA



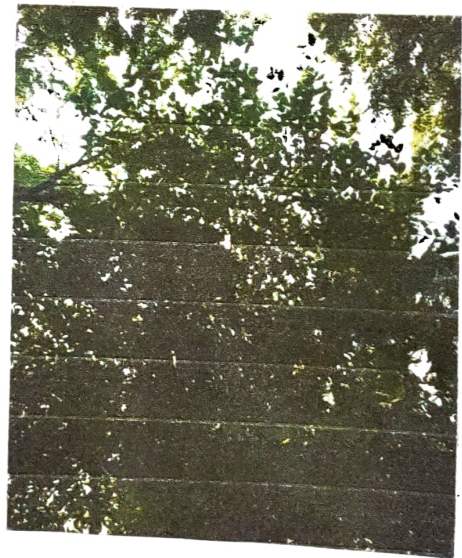
FRANGIPANI



CHINA ROSE



COCONUT TREE



BANYAN TREE

SL NO	Common Name	Scientific name	HABITAT	Description	SPECIAL features	STATUS
①	frangipani	<u>Plumeria rubra</u>	Terrrestrial	It's a shrub that grows in tropical, subtropical regions. Its flowers are white, yellow, pink or multicolour.	Its flowers can be used to make fragrance item. It is also used as a medical plant.	Common
②	china rose	<u>Hibiscus rosa-sinensis</u>	Terrrestrial	It's a bushy ever green shrub. The flower are multi-colour large, the bottom of the bud consists of calyx.	The flowers are bisexual. The flowers are solitary. The flowers are hypogynous.	Common
③	coconut tree	<u>Cocos nucifera</u>	Terrrestrial	It's a tree with a slim and smooth trunk, a crown of leaves, and green or yellow fruit. The flowers grow in clusters.	Coconut water have some medicinal properties. The stem is used for craft work. The tree is foliated in more than 20 coconut.	Common
④	Banyan tree	<u>Ficus benghalensis</u>	Terrrestrial	It reaches a height, up to 30 meters. Aerial roots develop from branches and become new trunk. It spreads laterally indefinitely.	It produce vast crops of figs. It provide a shadowed place. It's part is used in herbal medicine.	Common

FLORA



CARPE JASMINE



INDIAN RUBBER TREE



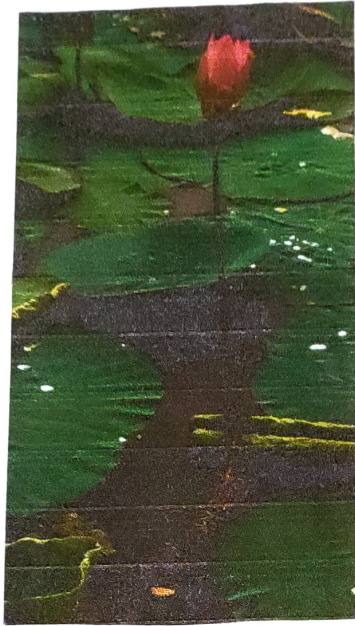
PANTHAPADAP TREE



MANGO TREE

SL NO	Common Name	Scientific Name	HABITAT	DESCRIPTION	SPECIAL FEATURE	STATUS
5	Crape Jasmine	<u>Tabernaemontana divaricata</u>	Terngestrual	It's an affnitive evergreen tree. The shiny dark green leaves. The white flowers with fine - six lebes.	It provides many kinds of medicine properties. The flower fragrant especially at night. Flower petals are twisted.	Common
6	Indian Rubber-tree	<u>Ficus elastica</u>	Terngestrual	The rubber plant has large, thick leaves, long and big likes fruits in ruins along the branches. The trunk exhude latex.	people make living bridge by guide its groots. Latex is used to make rubber. It was largest tree.	Rare
7	panthaPadap Tree	<u>Ravenala madagascanensis</u>	Terngestrual	It has Enormous paddle-shaped leaves are bordered and long petioles. The plants grows older. The flower are large and white.	The flowers upon being pollinated It has brilliant blue seeds. The plant is unidely evifinated.	Rare
8	mango Tree	<u>mangifera indica</u>	Terngestrual	It's deep rooted, evergreens. It had simple lance-cerate leaves. The fruit is roughly oval in shape with juicy edible mensocarp when ripe.	Fruits are rich source of VA, VC, VD. It gives us more O2 and absorbs CO2. It survive in semi-drayght condition.	Common

FLORA



LOTUS



SHAME PLANT

SL NO	COMMON NAME	SCIENTIFIC NAME	HABITAT	DESCRIPTION	SPECIAL FEATURE	STATUS
9	Lotus	<u>Nelumbo nucifera</u>	Aquatic	It is an aquatic perennial. It only comes in pink hues or white. The roots are imbedded in the soil of under-land and leaves float on the water surface.	It's the national flower of India. Lotus honey is useful for treatment at various eye diseases. It's the also national flower of Vietnam.	Common
10	Shame plant	<u>Mimosa pudica</u>	Terrrestrial	It is a prostrate. It is semi-erect of tropical America. It was sensitive soft grey green leaflets that fold and droop at night or when touched and called.	After touching it quickly folds its leaflets. The leaves also droop at night. They are often prickly.	Rare

TOPIC NAME

⇒ FAUNA

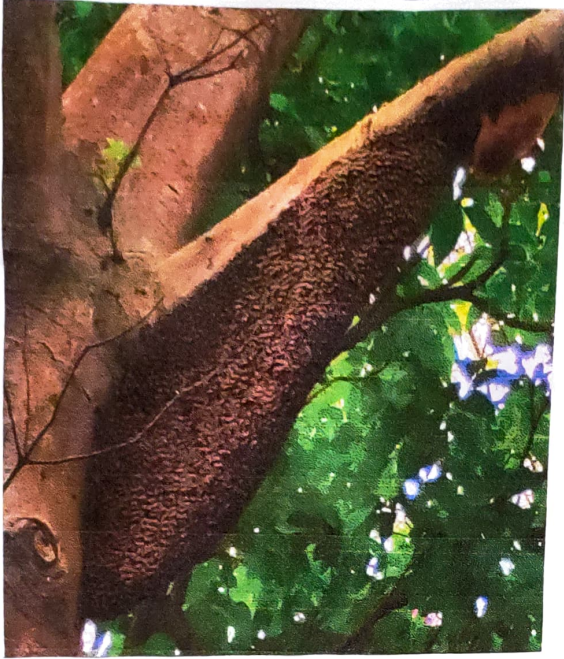
PEOPLE

Biodiversity register

• Place ⇒ CENTRAL PARK (SALT LAKE, KOLKATA)

• Date ⇒ 12th may, 2023

FAUNA



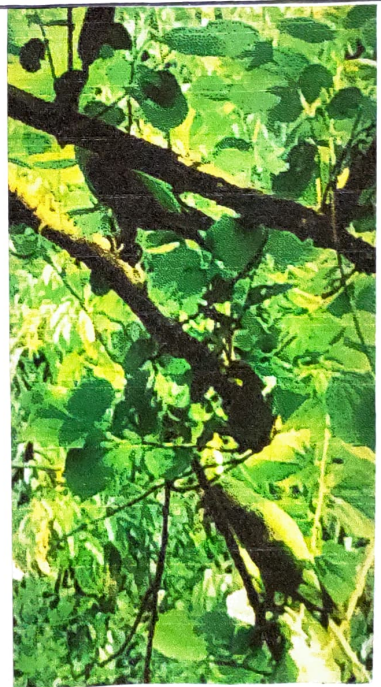
INDIAN HONEY BEE



BLACK ANT



SQUIRREL



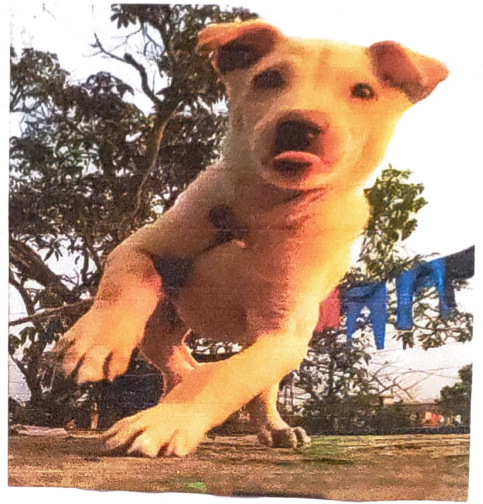
PARROT

SL NO	Common NAME	SCIENTIFIC NAME	HABITAT	DESCRIPTION	SPECIAL FEATURES	STATUS
①	Indian Honey bee	<u>Apis</u> <u>cerana</u> <u>indica</u>	Avi-fauna	It is a subspecies of Asiatic honey bee. It's ideal for bee keeping. It has sticky body covered with many hairs. The bee's head also houses the brain and contains several important glands.	They shift the colony often. They dominated by a single queen. They have fine eyes.	Rare
②	Black ant	<u>Formicidae</u>	Terrestrial	Ants evolved from wasp like on coeloms. It's nest in soil cavities. They are social insects. They live in colonies.	It's has large head with compound eyes. It has powerful mandibles. It has metapneustic glands that secrete an antibiotic fluid.	Common
③	parrot	<u>psittaci-</u> <u>formes</u>	Aboreal	It's small rodents with slender bodies bushy tails and large eyes. Tail feathers are sharp, soft and silky.	It zigzag to escape predators. It's front teeth never stop growing. It can find food buried beneath a front of snow.	Common
④	parrot	<u>psittaci-</u> <u>formes</u>	Aboreal	It has a strong, curved bill, an upright stance, strong legs. It's brightly or multi-coloured.	most parrots exhibit little. It can live over 100 years. It build nest inside trees. It can weigh upto 7 pounds.	Rare

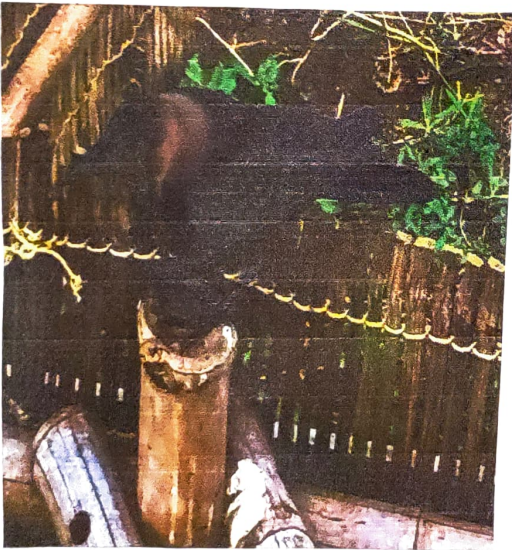
FAUNA



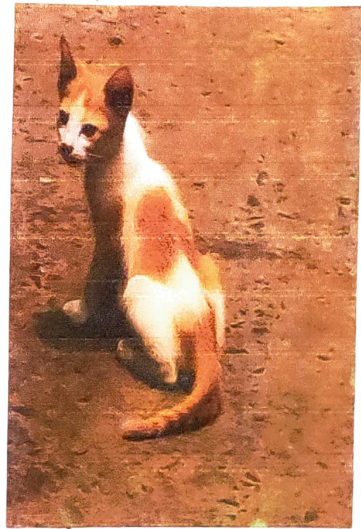
INDIAN MYNAH



DOG



CROW



CAT

SL NO	Common NAME	SCIENTIFIC NAME	HABITAT	DESCRIPTION	SPECIAL FEATURE	STATUS
5	common mynah	<u>Aeridotheres tristis</u>	Aboveal	The common mynah is brown with a black head. It has a yellow bill, legs are bare eye skin. In flight it shows large white wing patches.	The common mynah or Indian mynah, is a member of the family Sturnidae native to Asia. An omnivorous open wood land bird with a strong territorial instinct, the mynah has adapted extremely well to urban environments.	Common
6	Dog	<u>Canis lupus familiaris</u>	Terrestrial	It is a domestic mammalia of the canidae, It has four leg, bushy tail. It's black, white, brown, etc in colour.	It's sense of smell is good. It does not sweat like we do. It can shift of the same time as breathing.	Common
7	crow	<u>Corvus splendens</u>	Avi-faring	It is large. Intelligent all black birds with crowing voice. It has shiny to black feathers. It was along bill.	It is super smart. It can remember faces. It hide their food. It have huge brains.	Common
8	cat	<u>Felis catus</u>	Terrestrial	cat is a domestic animal, small in size - They have two mesmerizing eyes, two high sense fine ears and four legs.	It can jump 5 times their own height. It can jump to speed of 30-mph over short distance. It's genetic is almost same with tiger.	Common

FAUNA



COMMON TIGER BUTTERFLY



HERON

SL NO	COMMON NAME	SCIENTIFIC NAME	HABITAT	DESCRIPTION	SPECIAL FEATURES	STATUS
9	Common Tiger Butterfly	<u>Danays genutia</u>	Avi-fauna	It is a large butterfly. The tigers belong to the genus <u>Danais</u> . Characterised by having orange wings with black veins, a white subapical band, and a double row of white spots around the margins of the hind wings.	The largest lived of all species. They feed mostly on toxic plants. Consequently any bird that suffers the unpleasant experience of tasting a danus is unlikely to attack any similarly coloured butterfly.	Common
10	Heron	<u>Ardeidae</u>	Aquatic + Terrestrial	The herons are long legged and long necked wading and coastal birds. It's fish eating bird. It is in the family with 72 recognized species.	They are unmistakable. They can stand with their neck stretched out. They can eat upto 11 ponds of fish a day.	Common

BIBLIOGRAPHY

- (1) The book of Indian birds by Saïm Aïi.
- (2) Environmental studies by Dr. Sujan Kumar Bala.
- (3) <http://www.google.com>.
- (4) <http://www.wikipedia.com>.